

ASTM D 6371 – IP 309 – ISO EN 116 –

SCOPE:

This test method covers the determination of the cold filter plugging point (CFPP) of diesel and domestic heating fuels using automated equipment.

The results expresses an estimation of the lowest temperature at which a fuel will freely flow within a fuel system.

APPLICATIONS:

Diesels and heating fuels, Biodiesels

FULLY AUTOMATED COLD FILTER PLUGGING POINT

- Model NTL 450 -

- REF 60200 -

MAIN FEATURES

- Detection by specific optical cells
- Visualisation of the different cooling steps
- Possibility to use a programmed linear cooling slope
- Quick fixation on measuring head
- Stand alone or network multiple
- Visualisation of the sucking up time & release time sample
- Easy access to maintenance paramaters by software
- Easy access to hardware maintenance
- Electronic vacuum regulation with 15 l/h

SOFTWARE

- Computer interface through a user friendly software accessible by touch screen
- Connexion of external PC by Ethernet cable
- Storage of 200 results

NECESSARY ACCESSORY

REF 23205 Cryostat TLC 80 - 11 litres
Temperature range: -80 to +20°C
Offset: +/- 0.1 °C
Capacity: 11 Litres

SPARE PARTS

REF 17885 CFPP sample tube
REF 21916 CFPP Pipet
REF 40809 Basket for tube (set of 2)
REF 20882 Filtration assembly
REF 40822 45µ Filter on ring

SCOPE OF DELIVERY

NTL 450 is delivered complete with necessary glassware, temperature probe pipette, instruction manual.

CRYOSTAT to be ordered separately

Supply 230 V / 50 Hz 270x500x600 + or - 25kg



TOUCHSCREEN interface

Storage: 200 results

EXTERNALLY COOLED

DISTRIBUTED BY

NORMALAB FRANCE SAS

14 rue des Lilas - F-76 210 Lintot

Tel. : +332 35 38 59 59 - Fax : +332 35 38 78 55

NORMALAB BELGIUM S.A.

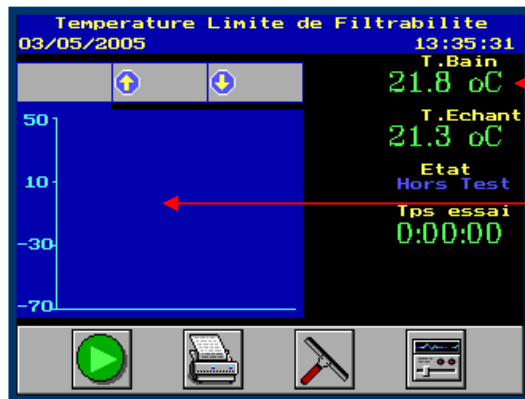
Parc Industriel

28 rue des Pieds-d'Alouette - BE-5100 NANINNE / Belgium

Tel : +32 81 71 19 90 - Fax : +32 81 22 27 01

ALL DATA ACCESSIBLE BY TOUCHSCREEN

SOFTWARE MAIN MENU:



Bath temperature can be changed by simple click

Click on graph : all test parameters can be viewed (sucking time, sample temperature, bath ...)

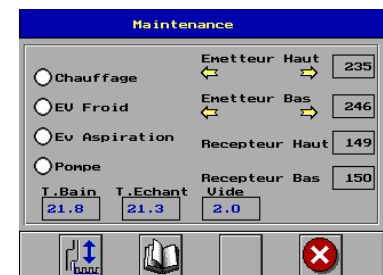
Test Start Data storage Cleaning programme Parameters

TECHNICAL SPECIFICATIONS

- ✓ Visualisation of the % of optical detection of the fork
- ✓ Vacuum visualisation
- ✓ Pt 100 sample temperature
- ✓ Jacket temperature
- ✓ Time at the rise and at the descent of the product
- ✓ Visualisation of the cooling levels
- ✓ Apparatus and captors status
- ✓ Adjustable bath temperature at stand by position
- ✓ Result of the last tests
- ✓ Sample identification
- ✓ Operator's name



Configuration parameters



Maintenance parameters

NORMALAB FRANCE SAS

14 rue des Lilas - F-76 210 Lintot

Tel. : +332 35 38 59 59 - Fax : +332 35 38 78 55

NORMALAB BELGIUM S.A.

Parc Industriel

28 rue des Pieds-d'Alouette - BE-5100 NANINNE / Belgium

Tel : +32 81 71 19 90 - Fax : +32 81 22 27 01

DISTRIBUTED BY