

ASTM D 97 - D 2500 - ISO 3015 & ISO 3016 - IP 15 & IP 219

SCOPE:

The Pour point describes a procedure for testing the fluidity of a petroleum product at a specified temperature. The Cloud point is defined as the temperature of a liquid specimen when the smallest observable cluster of wax crystals first appears upon cooling under prescribed conditions.

APPLICATIONS:

Lubricating oils, distillate and residual oils, Biodiesels.

CLOUD AND POUR POINT TEST CABINET WITH INTEGRATED COOLING - CPP CLASSIC -

REF 941592

MAIN CHARACTERISTICS

Cloud and pour test cabinet, mechanically refrigerated by CFC free gases, with electronic controller and temperature digital display, **4 compartments** (0, -17, -34, -51°C), each with 4 sleeves.

Delivered with test tubes, felts, 4 ASTM thermometers 5C, 4 ASTM thermometers 6C and 4 bath thermometers.

For use on AC 230V, 50 Hz - 16A

Dimensions : 900 x 625 x 1200 mm (±125 kg)

CONSUMABLES

REF 19439 Test tube

REF 9415901 Pack of 10 felt discs

REF 9415902 Pack of 10 felt rings

REF 11492 ASTM thermometer (5C), range from -38 to +50°C

REF 11493 ASTM thermometer (6C), range from -80 to +20°C

REF 11530 ASTM thermometer (61C), range



CLOUD AND POUR POINT BATH - CPP BASIC-

REF 941584

MAIN CHARACTERISTICS

Cloud and pour point apparatus, single temperature bath with 5 wells, stirrer and one set of 6 thermometers 5C, cooled by dry ice or cryostat.

For use on AC 230 V, 50 Hz – 1 A -

Dimensions: 290x 360 x 250 mm (± 9 kg)

CONSUMABLES

REF 19439 Test tube

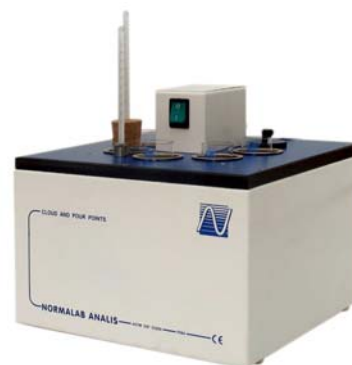
REF 9415901 Pack of 10 felt discs

REF 9415902 Pack of 10 felt rings

REF 11492 ASTM thermometer (5C), range from -38 to +50°C

REF 11493 ASTM thermometer (6C), range from -80 to +20°C

REF 11530 ASTM thermometer (61C), range from +32 to +127°C



For COOLING:

REF 941597 Dry Ice Machine

REF23205 Cryostat TLC 80 11 litres (-80°C / +20°C)

NORMALAB FRANCE SAS

14 rue des Lilas - F-76210 Lintot

Tel. : +332 35 38 59 59 - Fax : +332 35 38 78 55

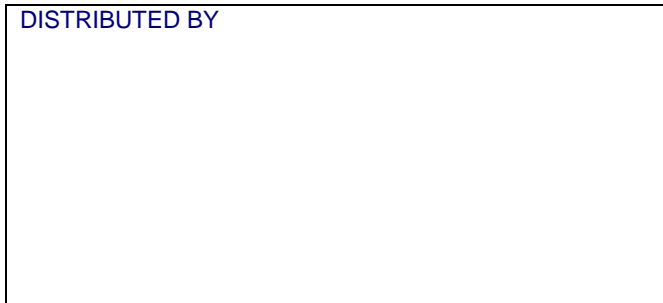
NORMALAB BELGIUM S.A.

Parc Industriel

28 rue des Pieds-d'Alouette – BE-5100 NANINNE / Belgium

Tel : +32 81 71 19 90 - Fax : +32 81 22 27 01

DISTRIBUTED BY





www.normalab.com

NORMALAB FRANCE SAS
14 rue des Lilas - F-76210 Lintot
Tel. : +332 35 38 59 59 - Fax : +332 35 38 78 55

NORMALAB BELGIUM S.A.
Parc Industriel
28 rue des Pieds-d'Alouette – BE-5100 NANINNE / Belgium
Tel : +32 81 71 19 90 - Fax : +32 81 22 27 01

DISTRIBUTED BY

--